

Frank Mohn Services AS

Service Bulletin

Keep you up to date with the latest news from Frank Mohn Services AS

Local control valves and service valves for cargo pumps



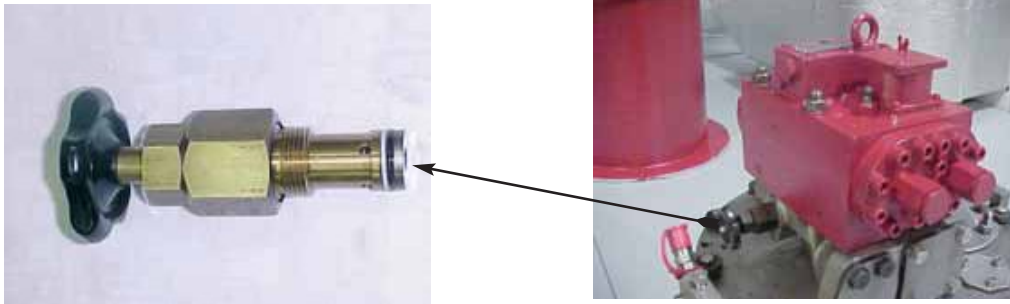
- **Correct operation**
- **Proper maintenance**
- **Increased lifetime**
- **Reduced costs**
- **Improved stripping result**

Dear Customer!

In this Service Bulletin we will draw your attention to the Local Control Valves and Ball Valves for the cargo pumps. By correct operation and maintenance of these valves the life time will be increased and your costs reduced.

Local control valves:

All cargo pumps have a local control valve. There are different designs depending upon generation.



The main purpose of the local control valve is:

- Control the cargo pump during stripping of the cargo tank.
- Stepless capacity control locally from deck, if required.

During stripping it is important to control the pumps from deck.
The benefits of this are:

- Improved stripping result.
- Reduced wear and tear.
- Better observation of fluctuation in hydraulic pressure.
- Better observation of pump's vibration.
- Immediate stop of cargo pumps upon completion of stripping.
- Regular operation of the local control valves will ensure properly functioning valves.

Special tool:

To improve the operation of today`s generation local control valves on cargo pumps equipped with the stainless steel Speed Torque Control valve (STC), a special tool is available.



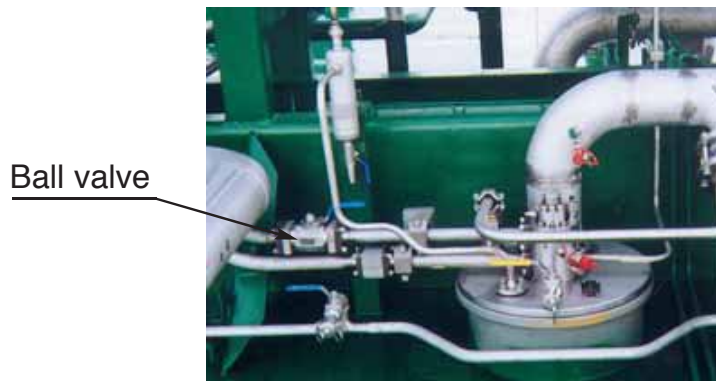
**Note: The valves must be
operated by hand force only!**

Ball valves:

In all Framo Cargo Pumping Systems designed after 1983, the ball valve on the hydraulic inlet line to each cargo pump shall always be in open position (even when the cargo pump is not in operation). The same applies to systems designed before 1983, which have been upgraded with pressurised return line (overpressure system). This to ensure the safety of having a pressurised hydraulic return side with a higher pressure than the static cargo pressure.

Also on older ships built before 1983, we recommend to keep the ball valves open. This to avoid opening the valves with high hydraulic inlet pressure. Operating the valves with high inlet pressure will reduce the valve's lifetime.

To avoid sticking we recommend to move all ball valves on deck quarterly, when the main hydraulic system is not in use.



Mild steel valves are delivered with primer only. During replacement a proper coating must be applied to the valves, and a corrosion protection must be maintained.

To increase the lifetime of these valves and reduce the costs:

- **Use them**
- **Move them**
- **Paint them**

If you need any further information or assistance, please do not hesitate to contact any of the worldwide FRAMO offices.



Frank Mohn Services AS

Head office: Frank Mohn AS, P.O. Box 98 Slåtthaug, 5851 Bergen, Norway, Phone: + 47 55 99 90 00, Telefax: + 47 55 99 93 80

Frank Mohn Flatøy AS, Flatøy, 5918 Frekhaug, Norway, Phone: + 47 55 99 94 00, Telefax: + 47 55 99 95 81

Frank Mohn Fusa AS, P.O. Box 10, 5641 Fusa, Norway, Phone: + 47 55 99 96 00, Telefax: + 47 55 99 97 80

Frank Mohn Services AS, P.O. Box 44 Slåtthaug, 5851 Bergen, Norway, Phone: + 47 55 99 92 00, Telefax: + 47 55 99 93 82

Framo Engineering AS, P.O. Box 174 Sandsli, 5862 Bergen Norway, Phone: + 47 55 92 88 00, Telefax: + 47 55 92 89 00

Frank Mohn Nederland BV, Edisonweg 18, P.O. Box 305, 3200 AH Spijkenisse, The Netherlands, Phone: + 31 181 619311, Telefax: + 31 181 611193

Frank Mohn Houston Inc, 1802 West D Street, La Porte, Texas 77571-4601, USA, Phone: + 1 281 471 7920, Telefax: + 1 281 842 5450

Frank Mohn Singapore Pte Ltd, 17 Tuas View Circuit, Singapore 637575, Phone: + 65 6210 2400, Telefax: + 65 6210 2401

Frank Mohn AS Sweden Office, Askims Industriväg 1A, 43634 Askim, Sweden, Phone: + 46 31 682085, Telefax: + 46 31 681048

Frank Mohn Nippon K.K., City-haz Chojamachi Building 6 - 3, Chojamachi 2-chome, Naka-ku, Yokohama 231-0033, Japan, Phone: + 81 45 253 7155, Telefax: + 81 45 253 7188

Frank Mohn Korea Office, Rm. 309, Yachting Center Bldg., 1393, Woo-1 Dong, Haeundai-Ku, Pusan, Korea, Phone: + 82 51 743 6942, Telefax: + 82 51 743 6944

Frank Mohn China Ltd, Unit 1008 Pine City, 8 Dong An Road, Shanghai 200032, China, Phone: +86 21 6443 8845, Telefax: +86 21 6443 8846

Frank Mohn do Brasil Ltda. Av. Presidente Vargas, 463 - 19º andar, Edifício Banita 20071-003 - Rio de Janeiro - RJ Brazil Phone: + 55 21 2507 7898 Telefax: + 55 21 2507 7888