

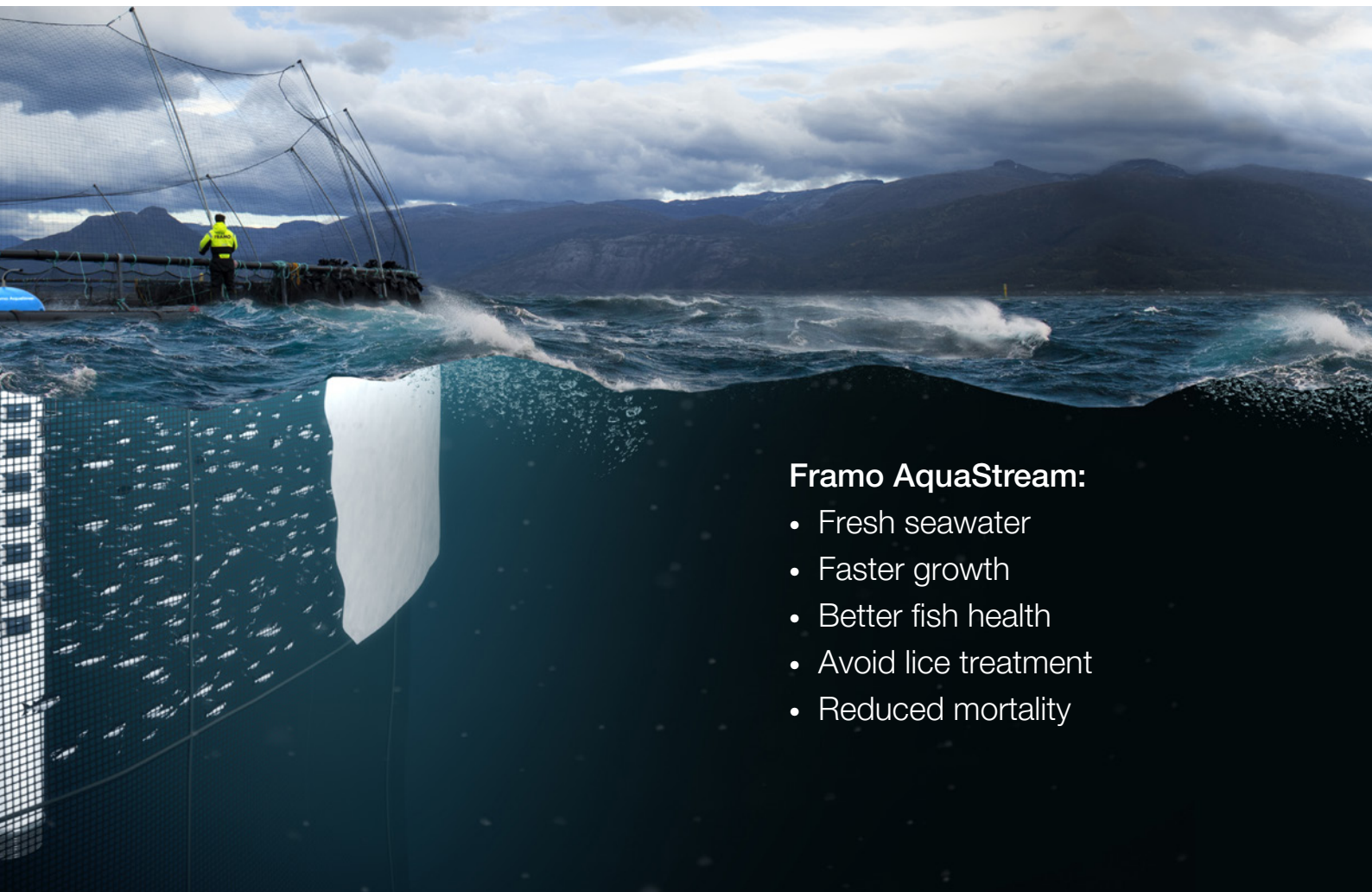
FRAMO AQUACULTURE

# AquaStream

– Optimal conditions in the pen







#### **Framo AquaStream:**

- Fresh seawater
- Faster growth
- Better fish health
- Avoid lice treatment
- Reduced mortality

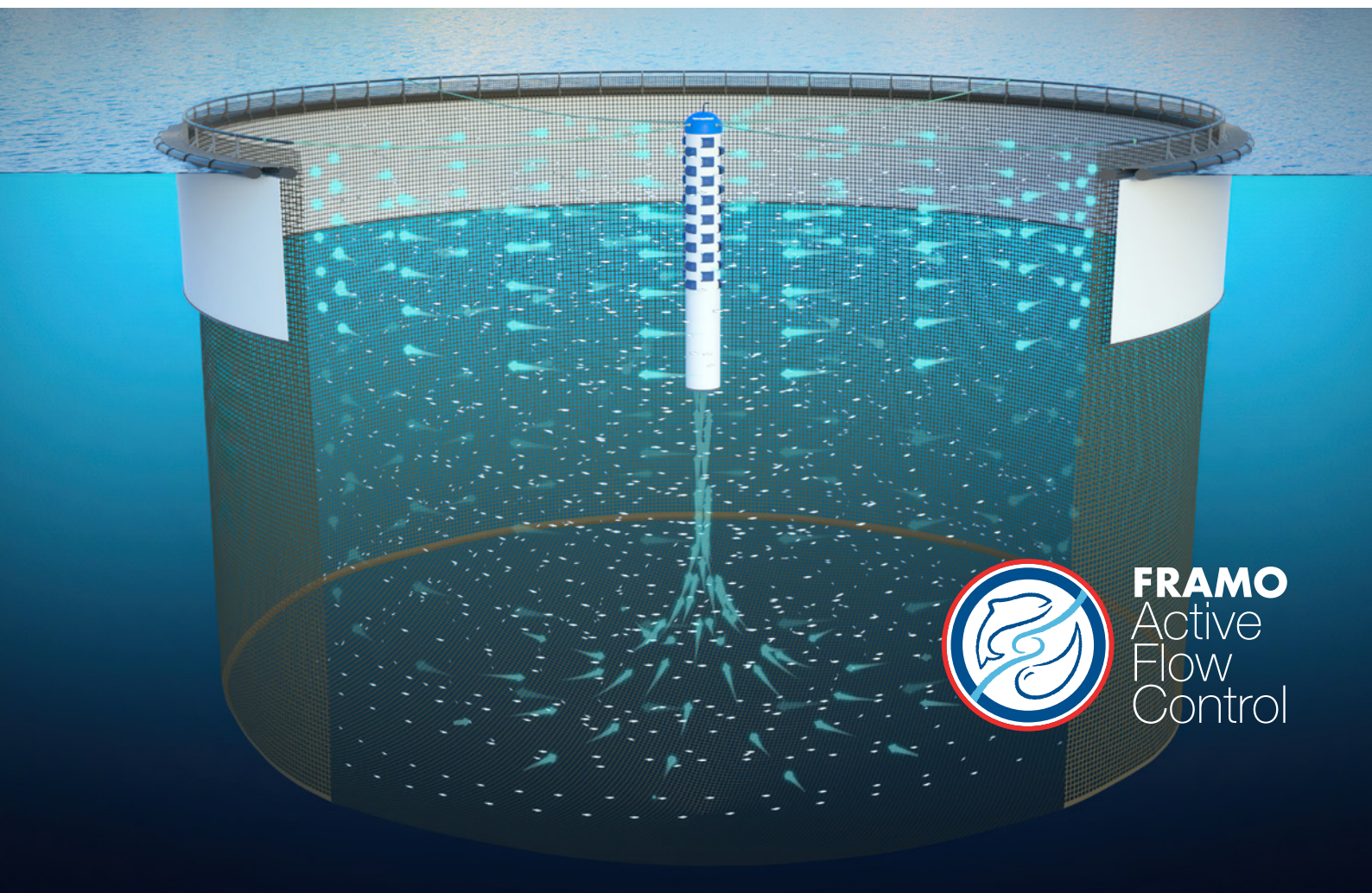
## How Framo AquaStream provides healthier fish and faster growth

The challenge Framo got from the fish farmers, is to recreate the natural currents and water exchange to obtain same optimal conditions as in the Norwegian fjords, by pumping fresh water into a pen with lice skirt.

Lice skirts in pens helps to reduce the lice problem, but at the same time reduce the water flow in the cage. With less water exchange and less oxygen, water quality deteriorates. This affects both fish health and fish welfare. With the Framo AquaStream, large amounts of fresh seawater are pumped up from under the algae and lice belt.

When AquaStream creates more currents in the cage, the fish become more active and develops a better appetite.





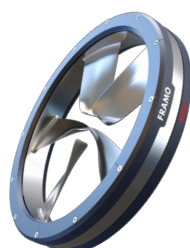
**FRAMO**  
Active  
Flow  
Control

## Framo AquaStream

AquaStream



SR2000



### Innovative products based on proven technology

Framo is a world-leading supplier of pumping technology to chemical tankers and offshore market. Common to both these industries are extreme demands both performance, reliability and Safety. We have taken these requirements with us into the aquaculture industry.

Through many years of collaboration with Norwegian fish farmers, we have developed good functional and reliable solutions for the aquaculture industry. Including complete solutions for completely and partially closed pens. These solutions handle water supply, water quality, and sludge management.

As a system supplier, Framo also supplies the control system. We have step-less capacity control with local frequency converters. The system can be centrally controlled or it can be connected to other control systems, as well as remote control.

### What you should know about Framo AquaStream

AquaStream is a complete pumping system for cages with lice skirts. Integrated in Framo AquaStream is the SR2000 pump, duct tunnel with nozzle tower, strainer, float and control system.

SR2000 is a permanent magnet motor, rim-driven flow generator, designed to pump large amounts of water in systems with low back pressure. The efficient pump has water-lubricated bearings. There is no lub-oil in the system and the engine has no gears nor shafts

Typical capacities are between 2,8 and 5,6 m<sup>3</sup> iper second.

### Technical data:

Amount of water (m <sup>3</sup> /h)	15.000
Effect (kW)	15
Material	Pump in stainless steel
Weight (kg)	Total 2500
Dimension transport	Ø 2500 mm x 2.2 m
Dimension operation	Ø 2500 mm x 20 m

**FRAMO Innovation Head office**

P.O. Box 23, NO-5329 Florvåg, Norway  
Phone: +47 55 99 90 00  
E-mail: [innovation@framo.no](mailto:innovation@framo.no)

[framo.com](http://framo.com)

**FRAMO Nederland**

Edisonweg 18  
P.O. Box 305  
NL-3200 AH Spijkenisse  
The Netherlands  
Phone: +31 181 619311  
[nederland@framo.no](mailto:nederland@framo.no)

**FRAMO Houston**

3002 East 13th Street  
La Porte, Texas 77571, USA  
Phone: +1 281 884 4800  
[houston@framo.no](mailto:houston@framo.no)

**FRAMO Singapore**

17 Tuas View Circuit  
Singapore 637575  
Republic of Singapore  
Phone: +65 6210 2400  
[singapore@framo.no](mailto:singapore@framo.no)

**FRAMO Nippon**

Kotsu Building 5F, 15-5  
Shinbashi, 5-chome  
Minato-ku  
Tokyo 105-0004, Japan  
Phone: +81 3 5776 2405  
[tokyo@framo.no](mailto:tokyo@framo.no)

**FRAMO Korea**

Rm 608, Centum Sh Valley  
35, Centum Dong – Ro  
Haeundae – Gu, Busan  
Korea, 612-020  
Phone: +82 51 743 6942/3  
[busan@framo.no](mailto:busan@framo.no)

**FRAMO Shanghai**

Building No.5, 123  
Lane 1165, Jin Du Road  
Min Hang District, Shanghai  
China 201108  
Phone: +86 21 6115 5000  
[shanghai@framo.no](mailto:shanghai@framo.no)

**FRAMO do Brasil**

Av. Presidente Vargas, 463  
/19º andar, Rio de Janeiro  
CEP 20071-003, Brazil  
Phone: +55 21 2507 7898  
[brasil@framo.no](mailto:brasil@framo.no)

**FRAMO Middle East**

Al Quoz Industrial Area  
P.O. Box 21467  
Dubai, United Arab Emirates  
Phone: +971 4 346 9143  
[dubai@framo.no](mailto:dubai@framo.no)

**FRAMO Service**

P.O. Box 44  
NO-5329 Florvåg, Norway  
Phone: +47 55 99 92 00  
[service@framo.no](mailto:service@framo.no)

**FRAMO Fusa**

Venjanaset  
NO-5641 Fusa, Norway  
Phone: +47 55 99 96 00  
[marine@framo.no](mailto:marine@framo.no)

**FRAMO Holsnøy**

Rosslandsvegen 933  
NO-5918 Frekhaug, Norway  
Phone: +47 55 99 75 00  
[pipings.marine@framo.no](mailto:pipings.marine@framo.no)

**FRAMO Flatøy**

Flatøyvegen 24  
NO-5918 Frekhaug, Norway  
Phone: +47 55 99 94 00  
[oil&gas@framo.no](mailto:oil&gas@framo.no)